

ALR définitions, indications rôles de l'infirmière

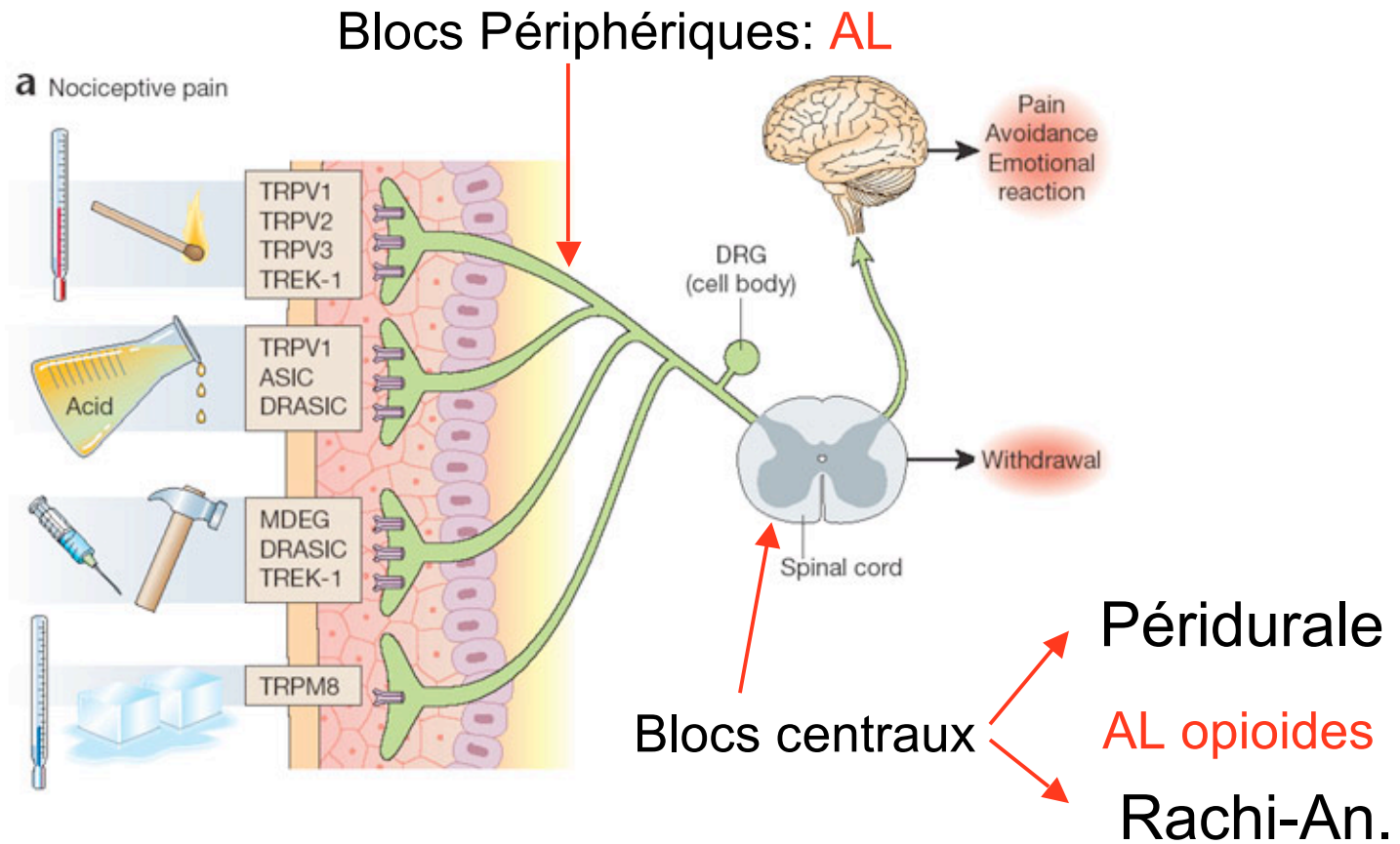
E. Guntz, MD, PhD

Hopital Braine l'Alleud Waterloo

ULB

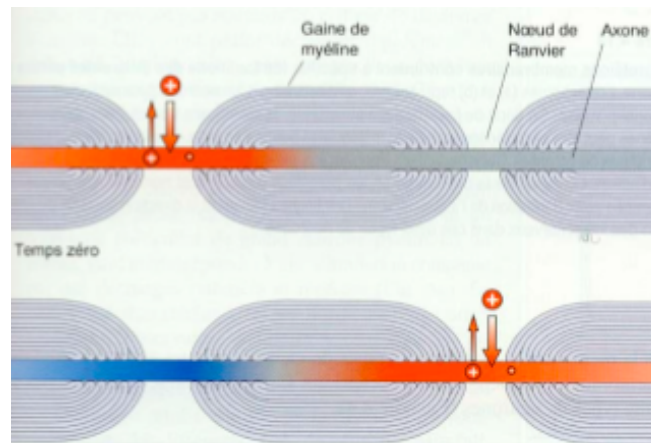
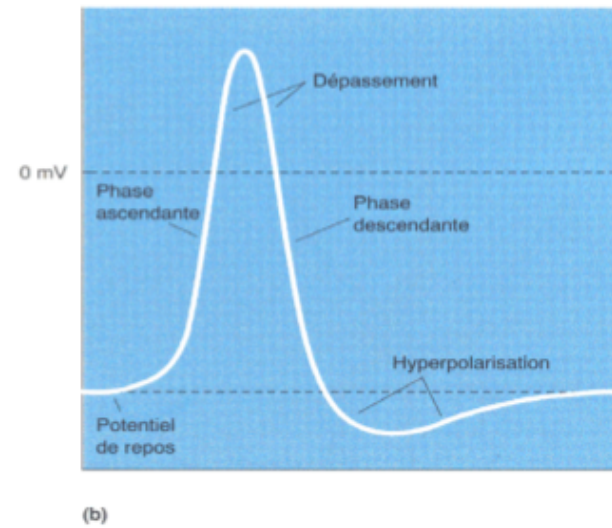
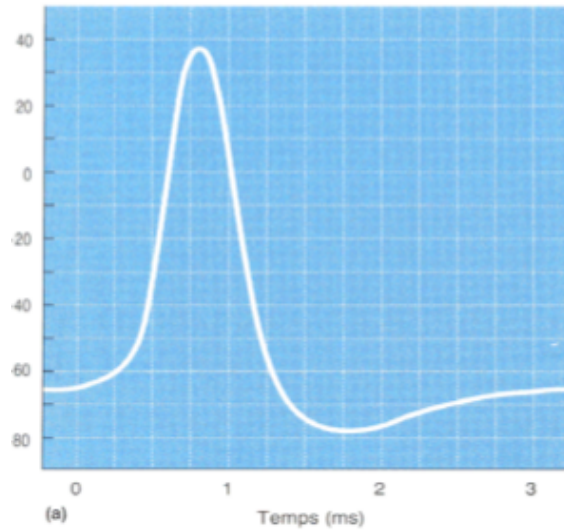


ALR définitions

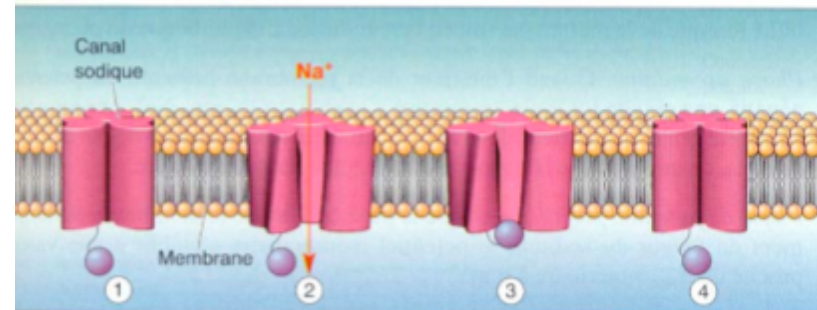
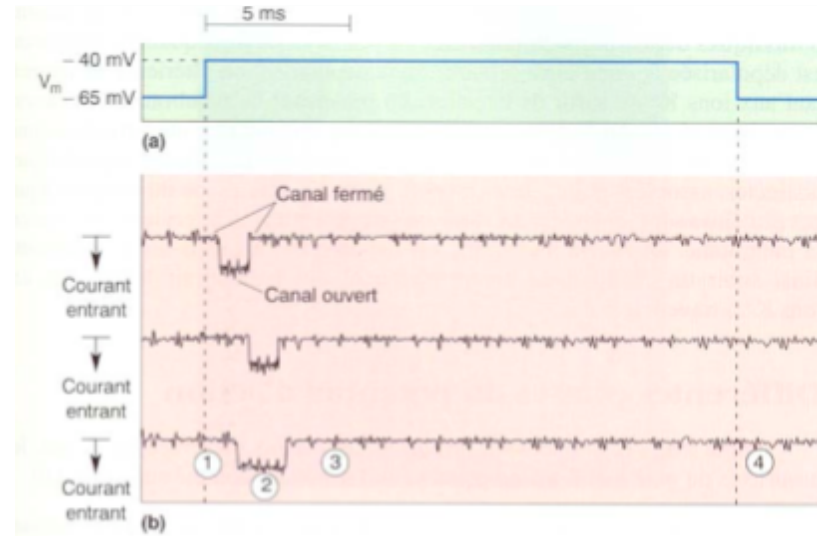
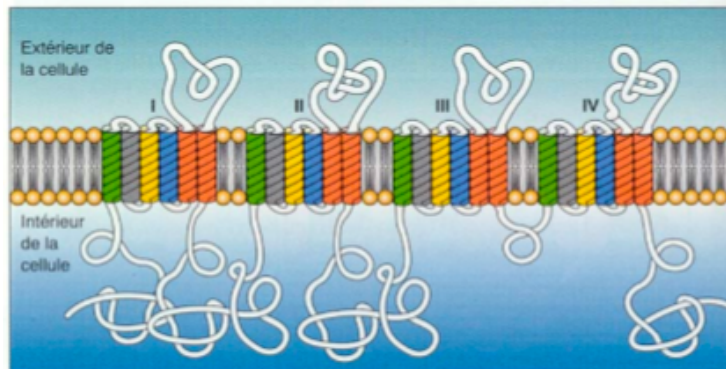
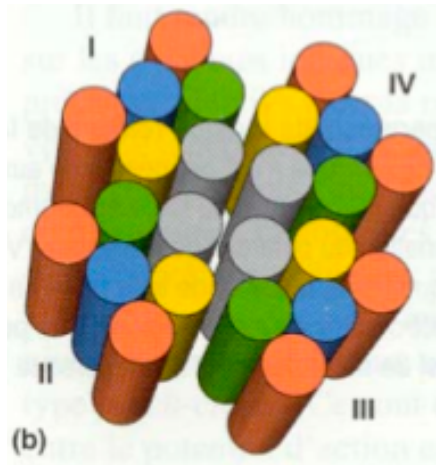


ALR définitions

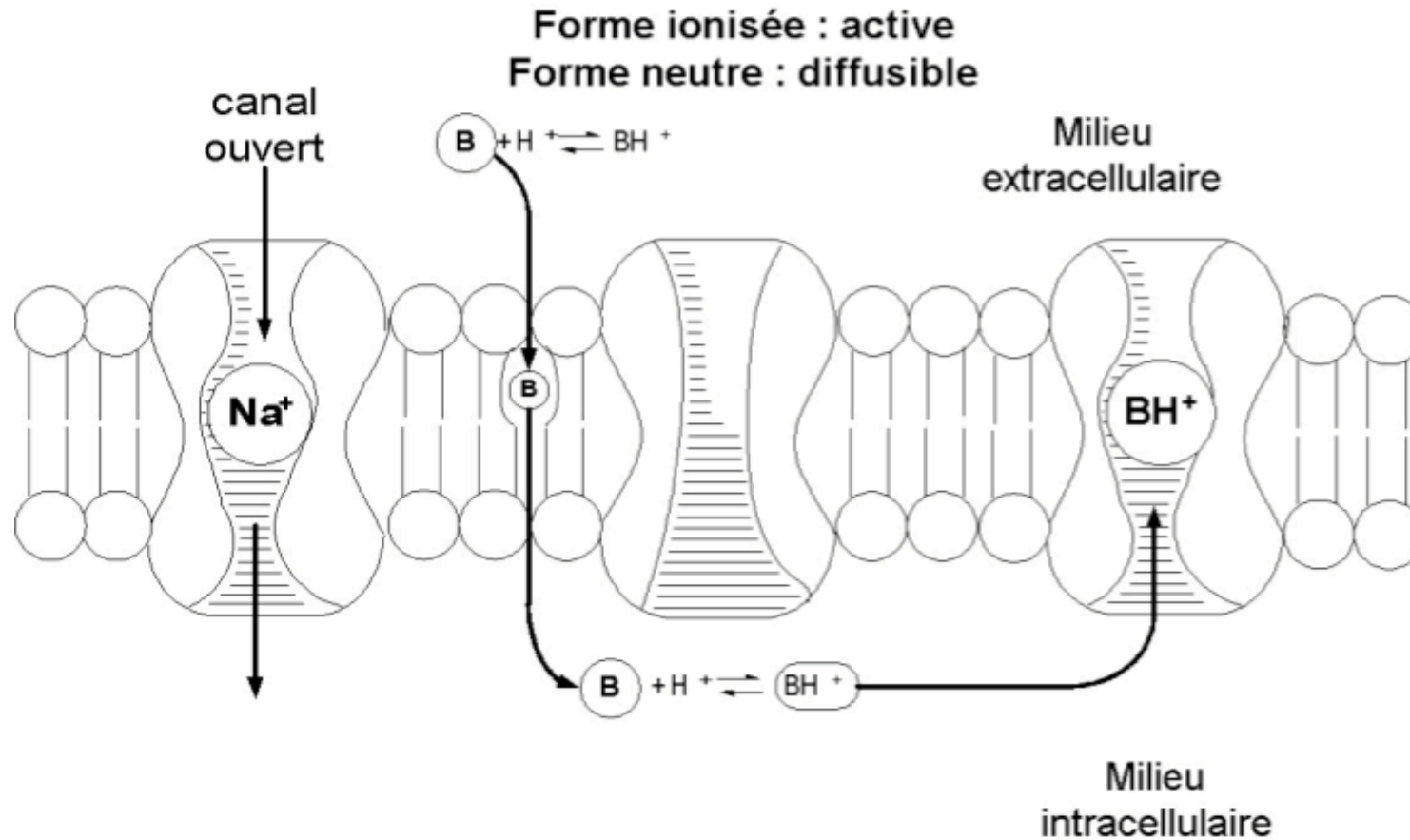
PA et conduction saltatoire



ALR définitions



ALR définitions

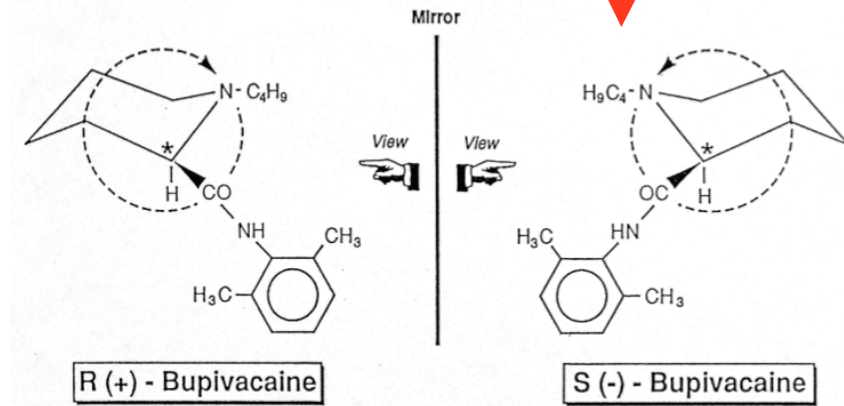
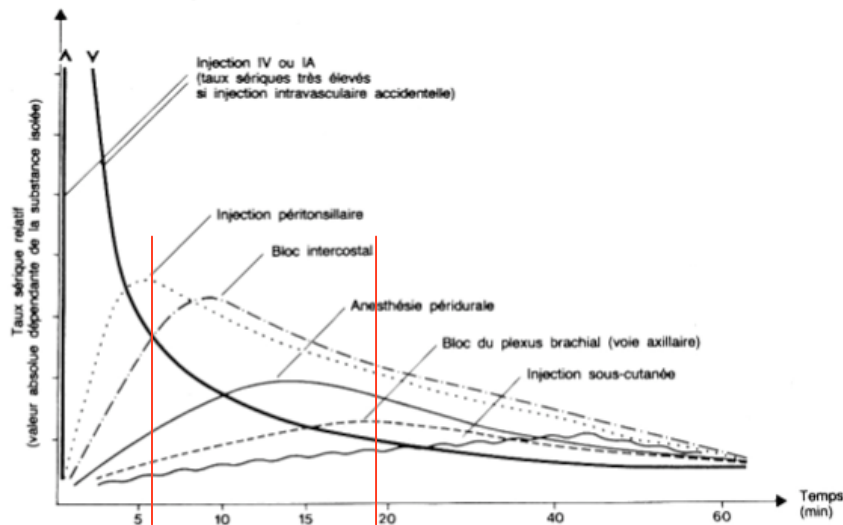
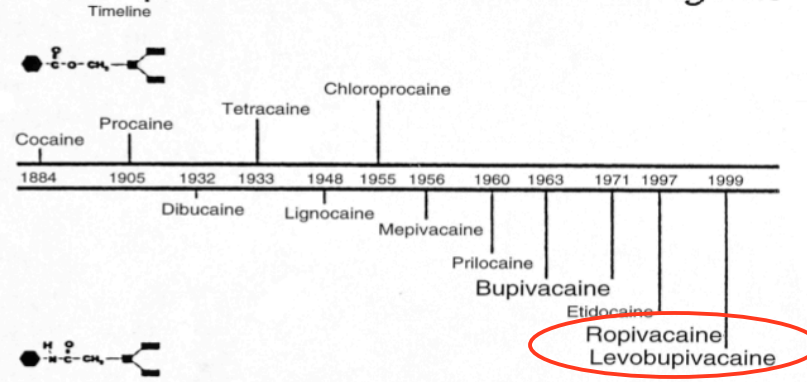


AL inhibe le PA en bloquant le canal sodique

ALR définitions



Development of Local Anaesthetic Agents



ALR définitions

Blocs centraux: Péridurale-Rachianesthésie

AL: bloc de conduction

Opioides: analgésie R. mu

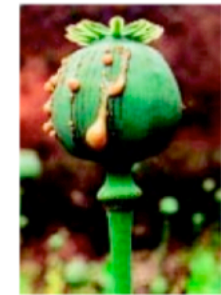
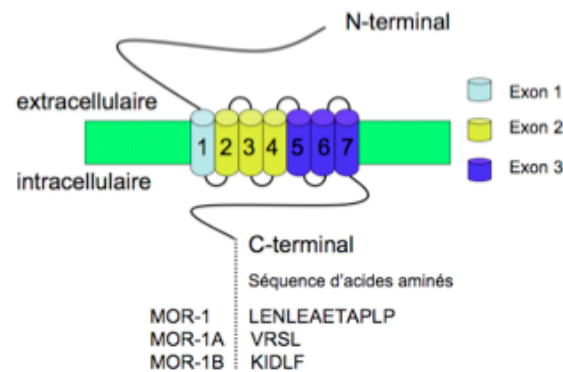
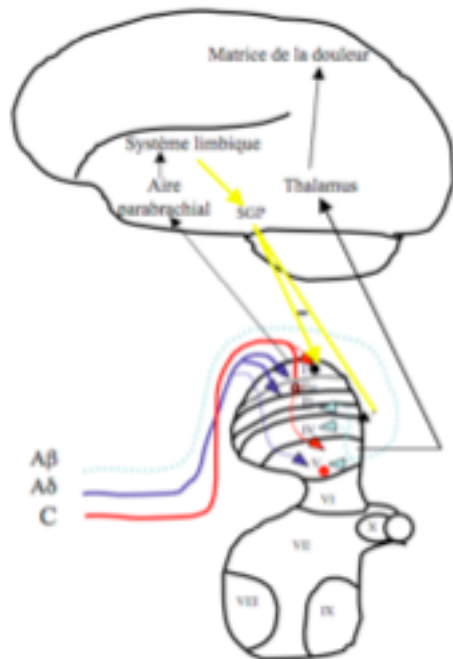
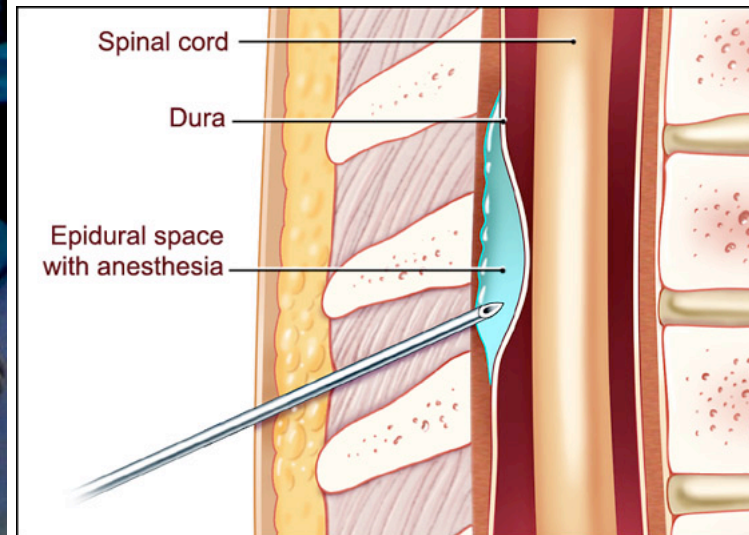
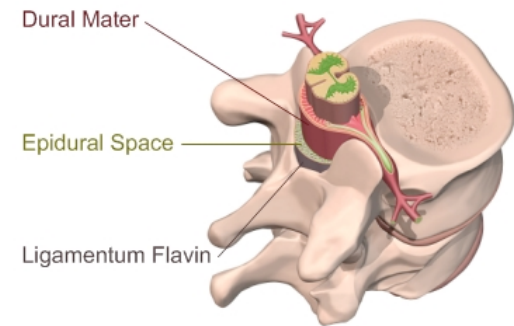


Figure 6: le pavot à opium. A gauche détail de la fleur et de l'intérieur du bulbe. Ci-dessus écoulement du latex après incision

ALR blocs centraux

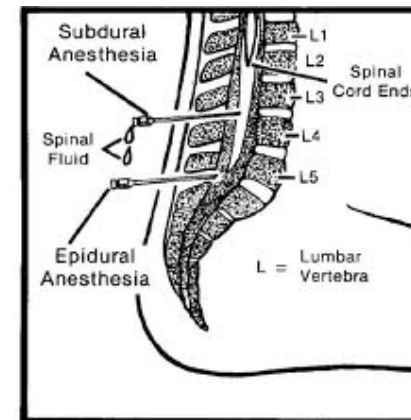
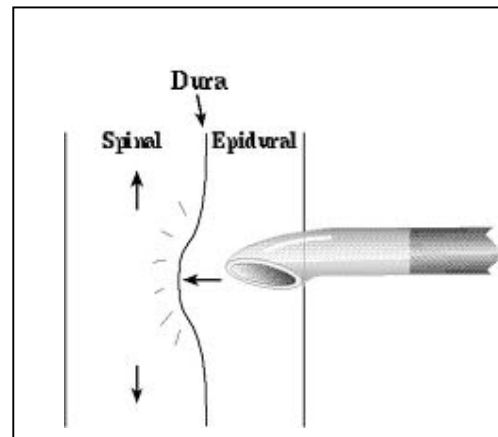
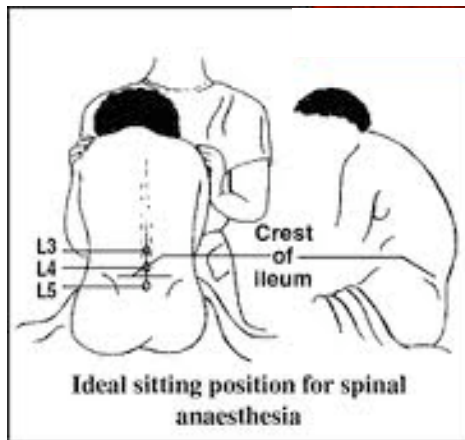
- **Blocs centraux: péridurales**

Chir Thoracique, Abdominale
Lombalgies, Cervicalgies



ALR blocs centraux

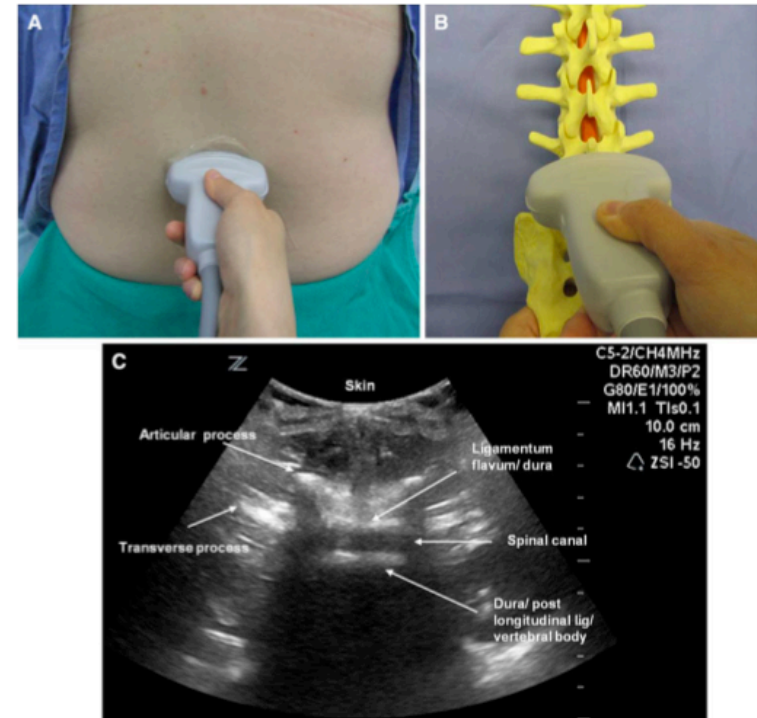
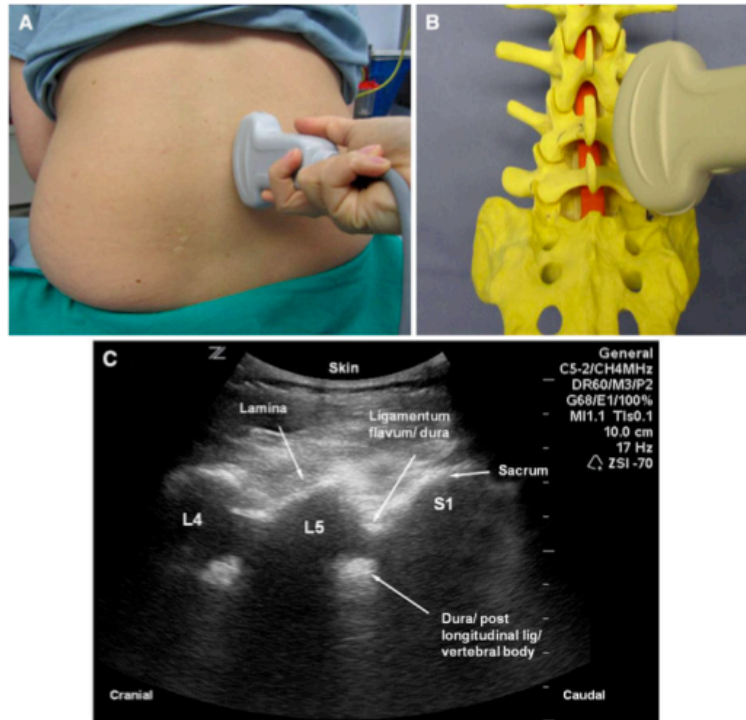
- **Blocs centraux**



Anesthésie: arthroscopie genou, saphenectomie (AL)

Analgésie: rachi-morphine

L'Avenir



Mrinalini Balki, MD

Can J Anesth/J Can Anesth (2010) 57:1111-1126

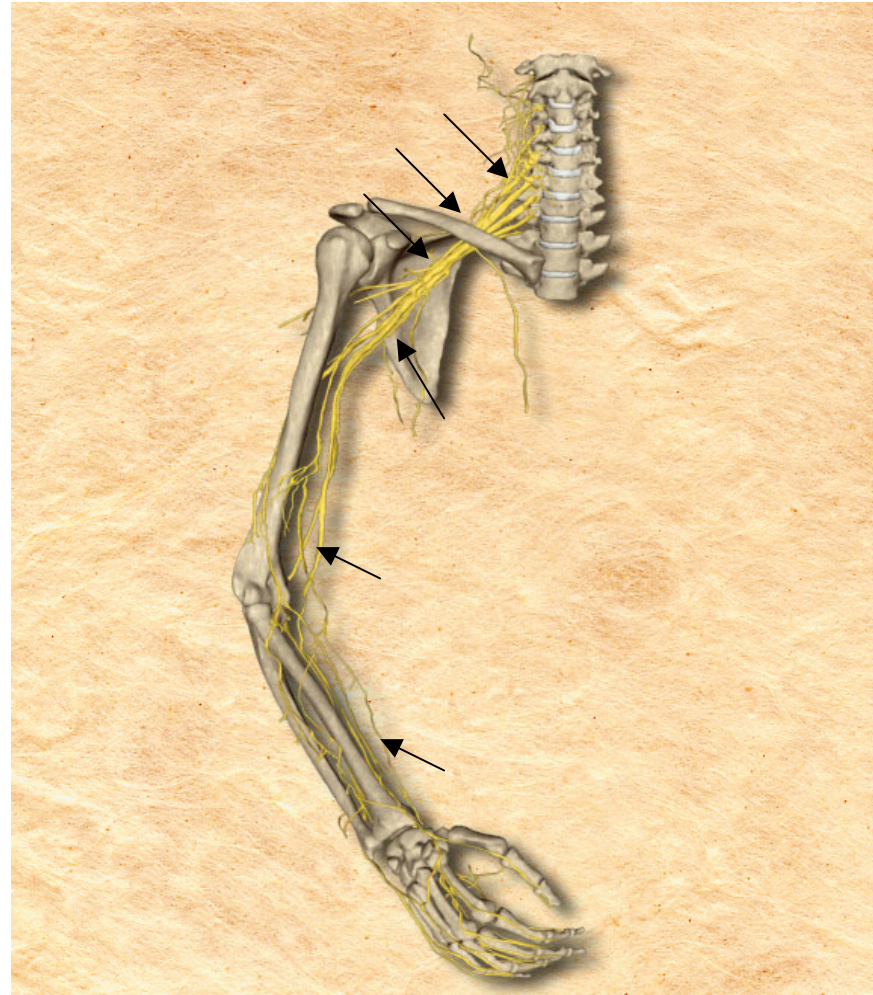
ALR blocs centraux rôle de l'infirmier/ère

L'infirmière s'assure avec l'anesthésiste
que tout le monitoring est en place
ECG, SaO₂, PANI
VVP
Respirateur vérifié

L'infirmière se place devant le patient
C'est elle qui a le contact avec lui
C'est elle qui voit l'expression du visage
C'est elle qui tient le patient

ALR blocs périphériques

Membre supérieur



Imagerie d'après CD A. Delbos